

Replacing an inflatable air blower.

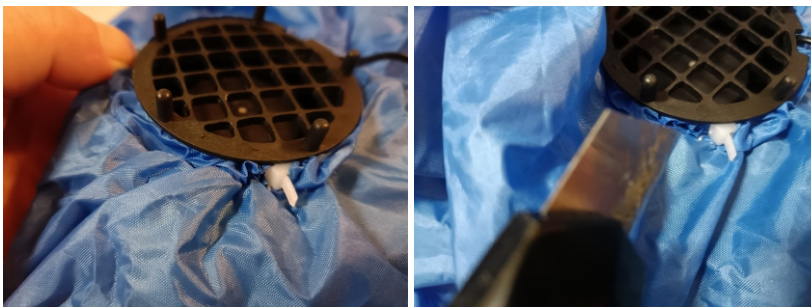


TOOLS:

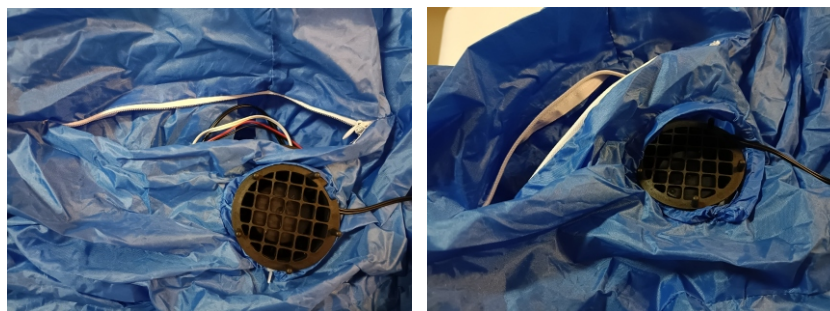
Stanley or flat blade knife.



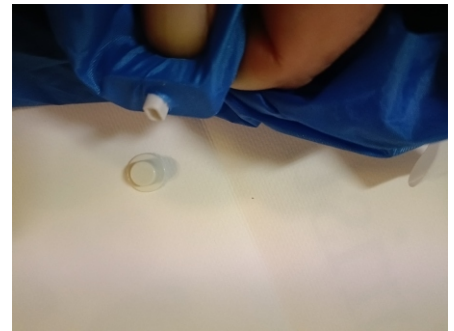
The original blower will be held in place with a ziptie. Use your Stanley knife to carefully cut the ziptie to remove it.



Locate & open the zipper. You should now be able to remove the old motor and old cord through the hole.



Follow the wire inside to remove the LEDs. The LEDs are inside with a cover on the outside. These can be removed by carefully sliding your knife underneath and popping off the top.



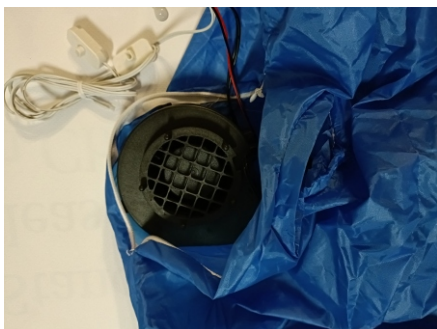
Remove the old blower, LEDs and wired plug from inside the inflatable. Discard it.

Install the new fan blower.

Feed the ziptie into the outer hem of the hole, the same place you removed it from earlier.



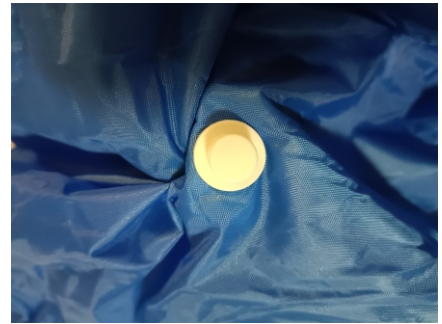
Place the blower fan inside the inflatable and feed the power plug out through the hole.



Fit the blower fan into the hole and tighten the ziptie to secure the blower fan in place.



Fit the LEDs from the inside by poking the rear divet through the old hole then pop the cap on from the outside to hold LEDs in place.



Replacement should now be complete. Zip up all zipper(s), plug in the unit and switch it on.

